

Christmas

IN-A-BOX

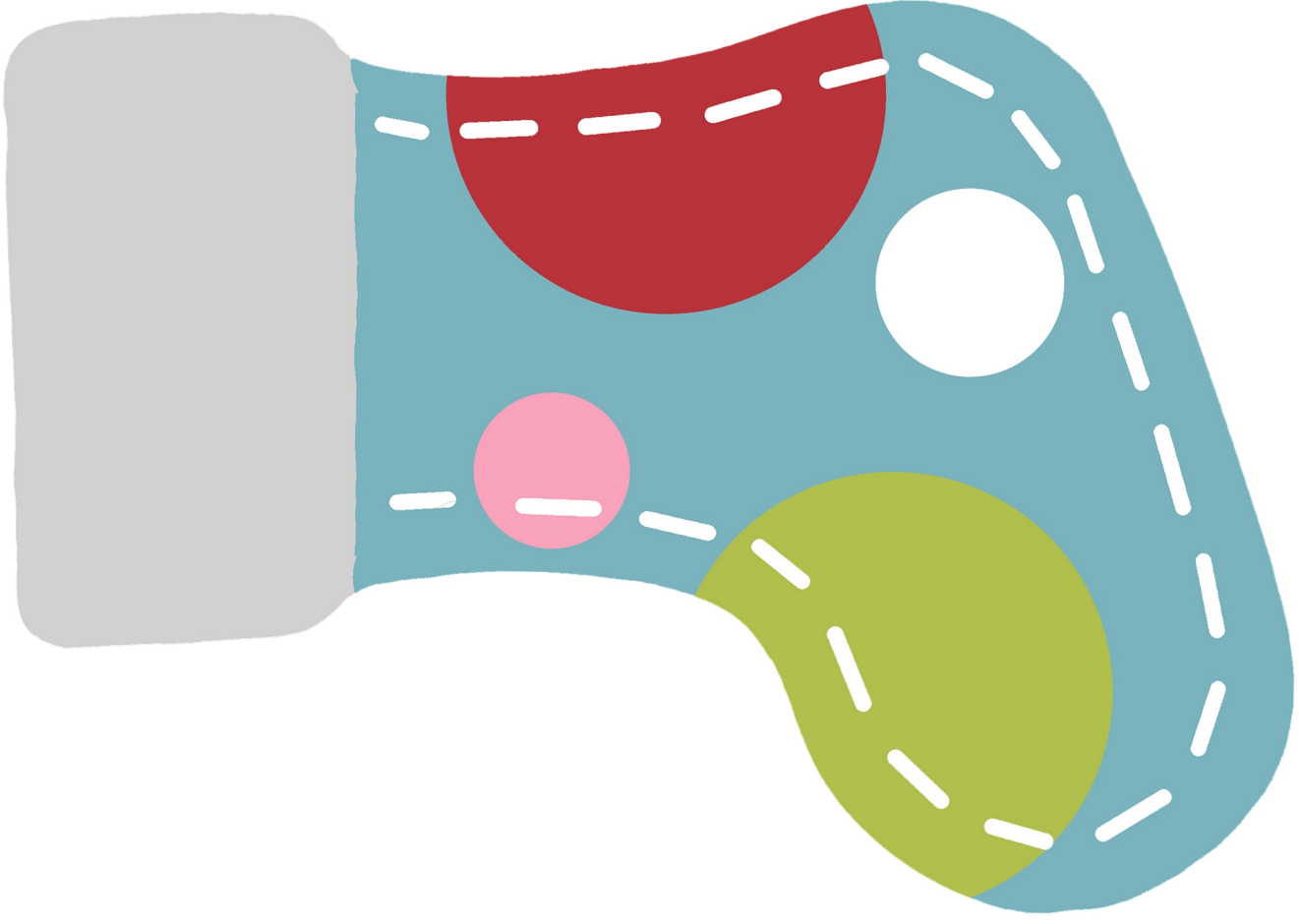
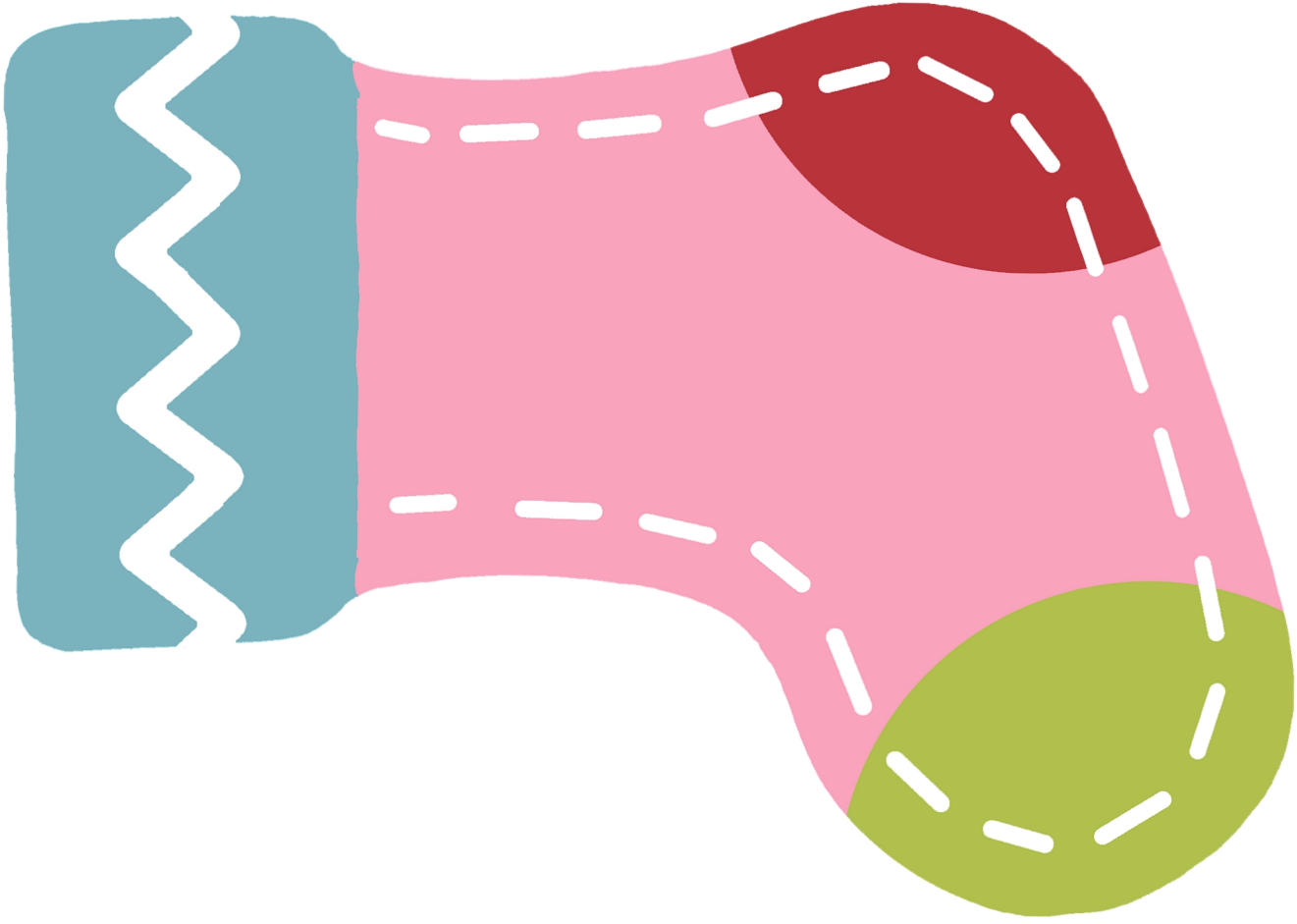
Stocking, Card and Box

STOCKING: Print on white cardstock. Cut each stocking out. Use that stocking to trace and cut another one. Punch holes along the sew lines and sew together with yarn. You can also laminate them before you thread with yard.

CARD: Print on card stock, cut and sign your name on the backside of the postcard. Place it on top of all items inside your Christmas-in-a-Box. Cut out tag and ribbon. Place ribbon around top of the box cover and tape it under the sides. Attach the tag with tape to the topside.

BOX: Set your printer to borderless 8.5x11 if possible and print the box on cardstock, laminate and fold using a ruler. Use scissors to score the paper. Fold, cut and staple corners together. Watch our video on how-to assemble box at www.YouTube.com/BrightlyStreet.







Christmas

IN-A-BOX

Box Contains: Christmas Tree, Ornaments,
Candy Cane, Stocking, Lights and more!



Christmas

IN-A-BOX

Here's a little box for you.
It's filled with things to see and do.
We think of you in special ways,
And hope it brightens your holidays.
It's a gift from the heart to someone dear,
To remind you God is always near.

